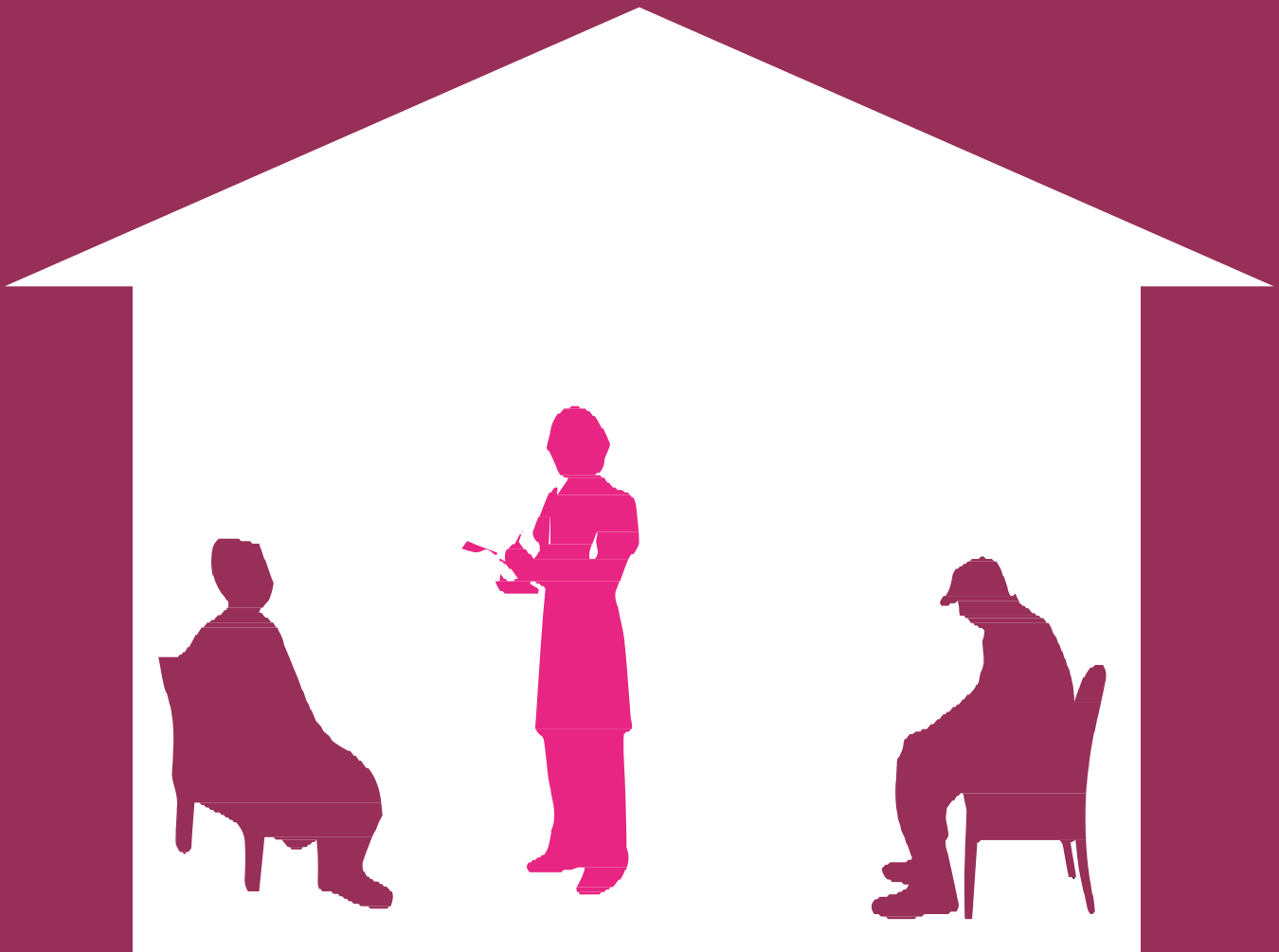


Organisational Abuse

This can include neglect, poor care practices or the regime of carers within an organisation or specific care setting



**“I don’t want to get ready
for bed at 5pm”**

If a person who has care and support needs is experiencing organisational abuse, contact:

- **Your local Safeguarding Adults Board**
- **Crimestoppers** on **0800 555 111**
- **Police** on **101**



WEST MIDLANDS
**REGIONAL ADULT
SAFEGUARDING
LEADS**
DEVELOPING POLICIES AND
PRACTICE ACROSS THE REGION